

Applications

Kidde systems are used on a wide variety of hazards throughout the world. These systems are designed to provide the type of fire protection you expect - where it is important to detect, isolate and suppress fires at the first indication of flame.

One of the main applications for carbon dioxide systems is in industrial processes where flammable liquids and vapors present a potential hazard. Fires spread rapidly and become so intense that many times they cannot be approached, let alone be extinguished with the usual portable fire equipment. A "fixed CO₂ system" designed specifically for the hazard and operated automatically, assures immediate detection and rapid suppression.

Kidde Carbon Dioxide systems are ideal for:

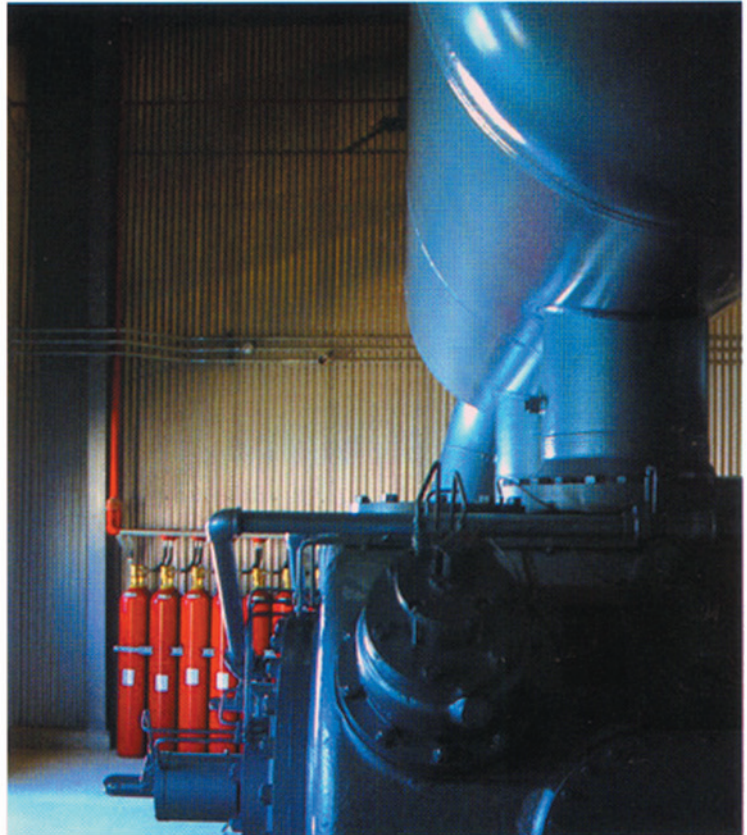
- flammable liquid storage areas
- printing presses
- quench tanks
- mixing operations
- spray booths
- turbine driven generators
- electrical areas
- rolling mills
- industrial ovens
- dust collectors
- large commercial fryers
- engine rooms
- paint lockers
- and many more industrial and marine applications.

Whatever the application, Kidde equipment provides "Peace of mind," through the knowledge that **Quality and Reliability** is a reputation with Kidde, not just words to live by. Our carbon dioxide systems are specifically designed with your needs in mind - protecting the hazards of today and tomorrow.

Remember-**Quality and Reliability** means

KIDDE
Fire Systems

A World Leader in Fire Protection!



Total flooding protection for a natural gas compressor/pumping station.



Local application protection for an industrial quench tank operation.